

SPI

Implementation in IQRF TR modules

User's guide



Simple way to smarter wireless solutions

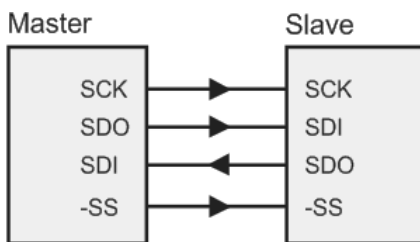
SPI general overview

SPI™ (Serial Peripheral Interface, introduced by Motorola) is a standard serial four wire synchronous data bus that can operate in full duplex. Devices communicate in master/slave mode with a single master initiating data frames. Multiple slave devices are allowed with individual slave select lines.

The **SPI bus** specifies four logic signals:

SPI signal	TR pin	function	
SCK	C6	Serial Clock	Issued by master
SDI	C7	Serial Data In	
SDO	C8	Serial Data Out	
-SS	C5	Slave Select	Issued by master

The SPI bus with a single slave:



SPI in TR modules

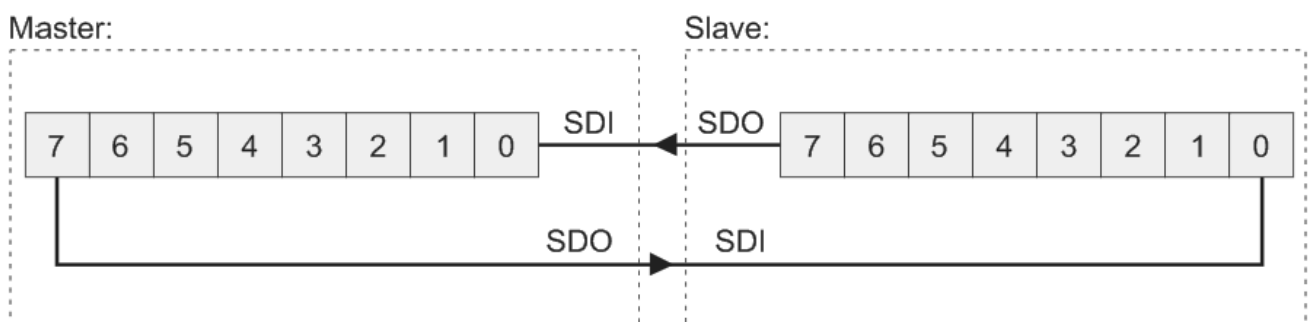
IQRF OS supports TR modules working as SPI slaves, full or half duplex. Master mode can also be realized but it is not supported by OS and must be programmed by the user. The hardware module for serial communication (MSSP) inside the microcontroller can be used for this. Using of interrupt is not allowed.

The rest of this document concerns SPI slave implemented in IQRF OS.

Data transfer

SPI communication is fully synchronous without any timeouts. It is packet oriented and works in OS background. Packets consist of selectable number of bytes.

Data is transferred using two internal shift registers to form a circular buffer, MSb first. After the registers have been shifted, the master and slave have swapped register values.



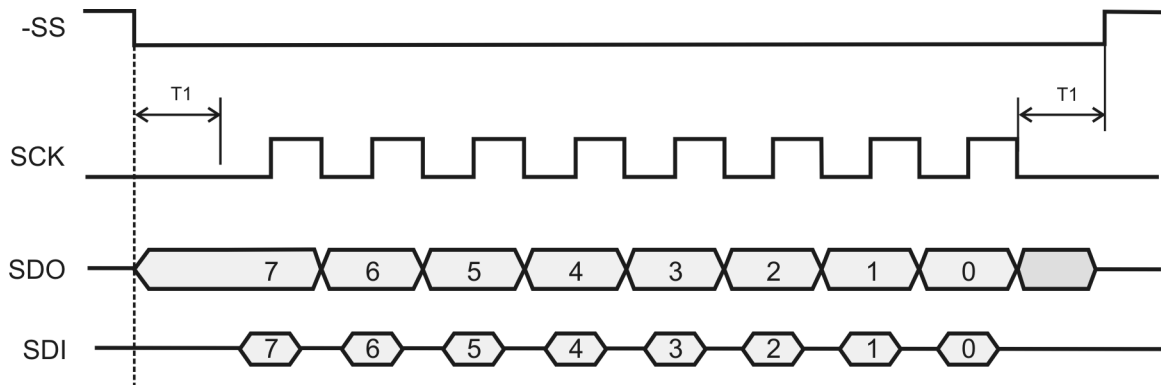
If the slave is configured to receive data, the received byte is copied to the `bufferCOM` then. More bytes can be transferred by this repeated process in single packet and stored to the `bufferCOM`, starting from `bufferCOM[0]`.

The TR module operates according the following **slave specification**:

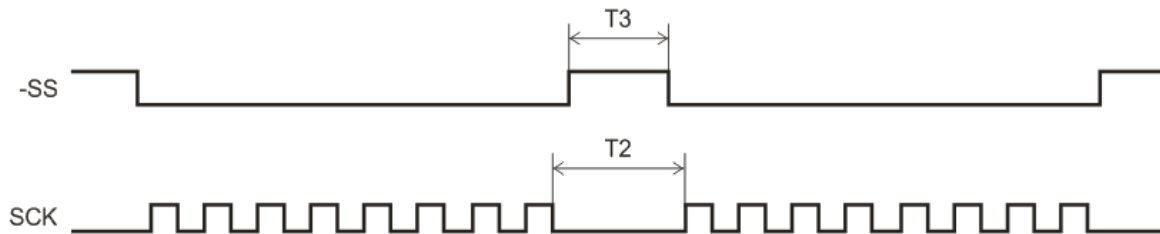
Slave select	Active low
Idle clock polarity	Low
Clock edge	Output data from TR on rising SCK edge

Timing (from the slave point of view):

To start the communication, the master pulls the Slave select low. Then the master must wait for at least the T1 period before starting to issue clock cycles. During each SPI clock cycle, a duplex data bit can be transmitted to complete a full duplex byte transmission in 8 clocks.



Then the master must wait for at least the T2 period before sending next byte. Deactivating the Slave Select for the T3 period between bytes is necessary.



SCK	SPI clock	250 kHz	max.
T1	-SS to SCK (falling edge), SCK (falling edge) to -SS	10 μ s	min.
T2	delay between bytes	100 μ s 500 μ s – in Slow mode (TR-32A and lower types only) Minimal value depends on application.	min. typ.
T3	-SS pulse between bytes	20 μ s	min.

For detailed information see datasheet of respective microcontroller, the MSSP module.

SPI status

IQRF SPI is implemented as a state machine. Thus, TR module stays always in one of given states and the module can be polled for this state at any time:

- by the slave using the `getStatusSPI()` function. See the IQRF OS Reference guide.
- by the master using the `SPI_CHECK` command. See the table below (SPI status).

After the `SPI_CHECK` command sent from the master to the slave via SPI the following answer will be sent from the slave to the master:

hex value	SPI status
00	SPI not active (disabled by the <code>disableSPI()</code> command)
07	SPI suspended by the <code>stopSPI()</code> command
3F	SPI not ready (buffer full, last CRCM O.K.). Data in <code>bufferCOM</code> is protected against overwriting by next transmission from the master. <code>startSPI(0)</code> can be used to enable further transmission.
3E	SPI not ready (buffer full, last CRCM error). <code>startSPI(0)</code> can be used to recover.
41 to 40+N _{max}	SPI data ready. Data length = this value – 0x40. Example 1: After the <code>startSPI(10)</code> the TR module returns state 0x4A until SPI transfer is started. It means that 10 B data is prepared in <code>bufferCOM</code> to be sent from the slave. Example 2: After the <code>startSPI(41)</code> the TR module returns state 0x69.
80	SPI ready (communication mode)
81	SPI ready (programming mode)
82	SPI ready (debugging mode)
83	SPI not working in background (during receiving of RF packet) – Slow mode (TR-32A and lower types only). Master should prolong the delay between individual bytes when this status is received. See the T2 parameter in the table above.
FF	SPI not active (HW error)

SPI status of the module is indicated by the IQRF IDE when used together with related IQRF development tools (e.g. CK-USB-04):



Packet structure:

The master can send two types of packets with the following structure:

Master checks the SPI status of the module:

Master	SPI_CHECK
Slave	SPISTAT

Master reads/writes a packet from/to the module:

Master	SPI_CMD	PTYPE	DM ₁	DM ₂	---	DM _{SPIIDLEN}	CRCM
Slave	SPISTAT	SPISTAT	DS ₁	DS ₂	---	DS _{SPIIDLEN}	CRCS

Where:

SPI_CHECK = 0x00
 SPI_CMD = 0xF0

SPISTAT: SPI status (see the table above)

PTYPE:

b7	b6	b5	b4	b3	b2	b1	b0
CTYPE		SPIDLEN					

SPIDLEN: data length (from 1 to N_{max})
 N_{max} = 41 (may differ for future types of TR modules)

CTYPE: communication type

- b7 = 1: bufferCOM changed (DM → DS or DM ↔ DS).
- b7 = 0: bufferCOM unchanged (DS → DM)

Typical applications often use just unidirectional transmissions (DM → DS and DS → DM) but in fact, physical communication is always full duplex:

- **DM ↔ DS**: Master sends useful data (to bufferCOM) and slave sends useful data (from bufferCOM).
- **DM → DS**: Master sends useful data (to bufferCOM).
 Slave sends dummy data (currently meaningless data from bufferCOM).
 Master can ignore incoming data (should be arranged by the user).
- **DS → DM**: Master sends dummy data (e.g. zeroes, see example below) just to generate clocks.
 Slave sends useful data (from bufferCOM) and ignores incoming data (arranged by OS).

DM: data from the master

DS: data from the slave

CRCM = SPI_CMD xor PTYPE xor DM₁ xor DM₂ ... xor DM_{SPIIDLEN} xor 0x5F

CRCS = PTYPE xor DS₁ xor DS₂ ... xor DS_{SPIIDLEN} xor 0x5F

CRCM must be calculated and sent by the master. OS verifies received CRCM and:

- returns 0x3F (O.K.) or 0x3E (error) to the master as an answer to the SPI_CHECK command.
- updates the SPICRCok flag for the slave after the getStatusSPI().

CRCS is calculated and included to outgoing packet by OS and should be verified by the master.

IQRF OS functions related to SPI

enableSPI(), disableSPI(), startSPI(x), restartSPI() (IQRF OS v3.00 or higher only), stopSPI() and getStatusSPI(). See the IQRF OS Reference guide.

Application

All communication is under the master's control. The slave can not initiate the communication at all, it can only offer one's own state to the master including a request to send data. Therefore the master should watch the state of the slave continuously and respond in corresponding way (comply with slave requirements, read offered data, calculate CRCM and check CRCS, verify successful reception by the slave, repeat unsuccessful transfers etc.)

Master should periodically send `SPI_CHECK` to get status of TR. Good practise for master MCU is to send `SPI_CHECK` every 10 ms. (IQRF IDE sends `SPI_CHECK` every 400 ms.)

If the slave requests to send data, the master should generate the "reading" packet for it. If it does not, the slave still stays in the state 41 to 69 and can be recovered e.g. by `startSPI(x)`.

If the master needs to send data it should check whether the slave has processed previous data (so that the slave is in the communication mode again). If omitted the packet is lost and the `bufferCOM` is not overwritten. To refuse data by the slave for other reasons the `stopSPI()` function is intended. If the slave is not ready (SPI is stopped or disabled by the slave or the `bufferCOM` is full) it is useless to send packets by the master.

Stopped SPI communication can also be restarted by `startSPI()` (for TR modules with OS v3.00 or higher only) to continue. Thus, current packet can be completed later on.

Useful data can be exchanged at the same time (full duplex) but it is not usual in typical applications.

The slave should also take into consideration its own state using `getStatusSPI()`. Return value and output flags are optimized for user program requirements and that is why they differ from the SPI status format sent to the master.

See IQRF OS User's guide, IQRF OS Reference guide, Application examples, Application notes and www.iqrf.org.

Demo example how to implement SPI master in MCU can be downloaded from www.iqrf.org/weben/downloads.php?id=158.

Example

Example how to communicate with TR module via SPI.

Configuration:

- The E07-SPI example uploaded in a TR module
- The IQRF IDE – SPI Test running on PC. Values "from master" should be typed to the *TX Data* field and values "from slave" can be watched in the *RX Data* field.

```

from master: 00          // SPI_CHECK
from slave:  80          // SPI_STATUS – the module is in communication mode
.
.
.
.
.
from master: 00          // SPI_CHECK
from slave:  80          // SPI_STATUS – the module stays in communication mode

from master: F0.81.69.47.00 // Now the master wants to send data: "i"
                        // F0 81: SPI_CMD (PTYPE = 81: DM → DS, SPIDLEN = 1)
                        // 69: "i" in ASCII
                        // 47: CRCM (F0 xor 81 xor 69 xor 5F)
                        // 00: SPI_CHECK added to get SPI_STATUS: CRCM ok or error

from slave:  80.80.30.EE.3F // 5 B answer for 5 B issued by master
                        // 80 80: 2 x SPI_STATUS – the module is in communication mode
                        // 30: dummy - current (undefined) content of bufferCOM
                        // EE: checksum (81 xor 30 xor 5F)
                        // 3F: SPI_STATUS: CRCM is ok

from master: 00          // SPI_CHECK
from slave:  4A          // SPI_STATUS - the module offers 10 B in bufferCOM

from master: F0.0A.00.00.00.00.00.00.00.00.00.00.A5.00
                        // F0 0A: SPI_CMD (PTYPE = 0A: DS → DM, SPIDLEN = 10)
                        // 10 x 00: dummy (to generate master clock only)
                        // A5: checksum (F0 xor 0A xor 00 ... xor 00 xor 5F)
                        // 00: SPI_CHECK

from slave:  4A.4A.30.31.32.33.34.35.36.37.38.39.54.3F
                        // 4A 4A: 2 x SPI status (ready to sent 10 B)
                        // 30 ... 39: data from bufferCOM (10 B)
                        // 54: checksum (0A xor 30 ... xor 39 xor 5F)
                        // 3F: SPI_STATUS: CRCM is ok

from master: 00          // SPI_CHECK
from slave:  80          // SPI_STATUS - the module is in communication mode
.
.
.
module
.

```

Document history

101223	Updated for IQRF OS v3.00.
100310	Completely revised. Example added.
090427	<code>_SPIbusy</code> and <code>_SPIwrite</code> flags not documented. Use <code>getStatusSPI()</code> instead of <code>_SPIbusy</code> .
080516	First release.

Sales and Service

Corporate office:

MICRORISC s.r.o., Delnicka 222, 506 01 Jicin, Czech Republic, EU
Tel: +420 493 538 125, Fax: +420 493 538 126, www.microrisc.com

Partners and distribution:

please visit www.iqrf.org/partners

Quality management:

ISO 9001 : 2000 certified

Trademarks:

*The IQRF name and logo are registered trademarks of MICRORISC s.r.o.
PIC, SPI, Microchip, RFM and all other trademarks mentioned herein are property of their respective owners.*

Legal:

All information contained in this publication is intended through suggestion only and may be superseded by updates without prior notice. No representation or warranty is given and no liability is assumed by MICRORISC s.r.o. with respect to the accuracy or use of such information.

Without written permission it is not allowed to copy or reproduce this information, even partially.

No licenses are conveyed, implicitly or otherwise, under any intellectual property rights.

The IQRF products utilize several patents (CZ, EU, US)

On-line support: <http://iq-esupport.com>



Simple way to smarter wireless solutions